

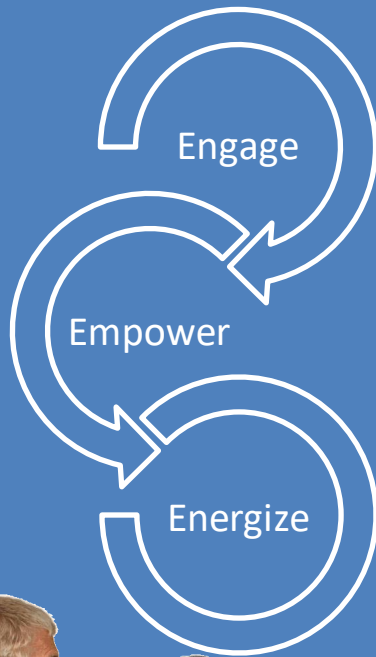
 NetWeavers™ Connect  
Engage | Empower | Energize

*Taking Relationship Building and Resource Sharing to a Whole New Level!*



**Roberts S. Littell**

Founder/Author/Chief Net Weaver



## About NetWeaving

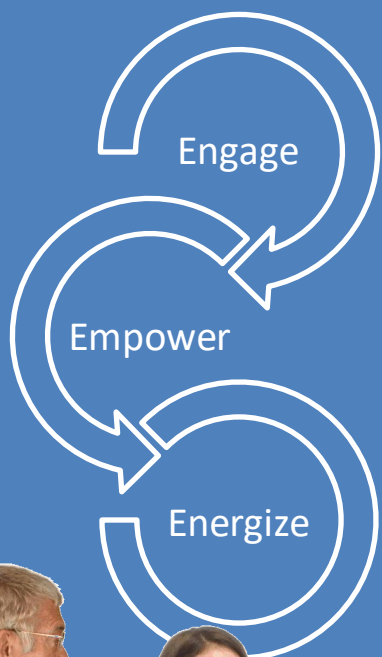
NetWeaving is about building meaningful and trusted relationships by acting both as a connector of others, as well as a no-strings-attached resource-provider for others.

NetWeaving is also defined as the *Pay-It-Forward* form of networking. NetWeavers have a strong belief in the law of reciprocity - *what goes around, does come back around*.

**NetWeavers™ Connect**, will serve as the *go-to-platform* for NetWeaving enthusiasts around the world.

**NetWeavers™ Connect** is an online community developed exclusively for NetWeaving practitioners whether you're just starting on your NetWeaving journey or a seasoned professional.

The platform has been designed with a variety of features to engage, to facilitate relationship building, resource sharing, referral generation and professional development.

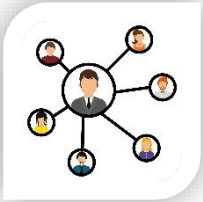


## Table-of-Contents

- Social NetWeaving
- NetWeaver™ Aptitude Assessment Quiz
- NetWeaver™ Diplomat Certification Course
- NetWeaver™ Ambassador Program
- NetWeaver™ Groups & Forums
- NetWeaver™ Ripple Effect Stories
- Points & Reward Program
- Pay-it-Forward
- NetWeaver™ Catalyst Connectors
- Marketplace
- eLearning Center
- Events Calendar
- Tracking & Reports
- Multilingual Translation
- Pilot Program (Pre-Launch)



## Social NetWeaving



NetWeaver™ Social Allows Members to Connect and Share Around a Common Interest of Meaningful Relationships Building.



Create Profile



Connect & Follow



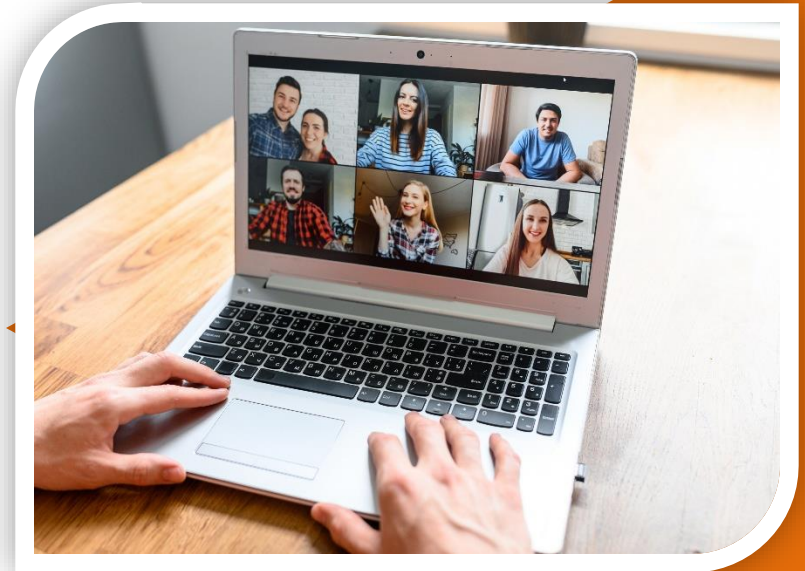
Create/Join Groups



Discussion Forum



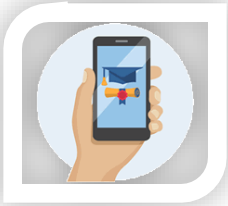
Collaborative Learning







## Aptitude Assessment

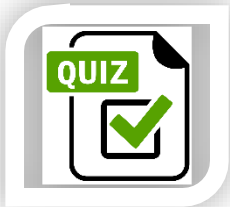


The **NetWeaver™ Aptitude Assessment Quiz** Allows Anyone to First See Where They Stand as it Relates to Their Attitude and Aptitude Concerning the NetWeaving Concept, Skill Sets, and Action Steps.

### NetWeaving Levels:

- Natural NetWeaver
- NetWeaver in the Wings
- NetWeaver's Apprentice
- NetWeaving Skeptic

### Assessment Quiz



After You See How You Scored, You Will Want to Proceed and Take the **NetWeaver™ Diplomat Course** and Become Certified.





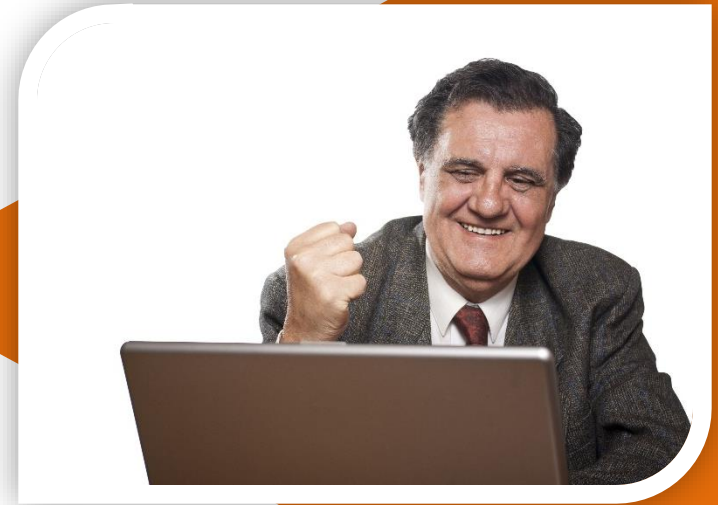
## Diplomat Certification



The **NetWeaver™ Diplomat Certification Course** Teaches Members How to Build and Expand a Trusted Resource Network.

### Learn Three Skill Sets:

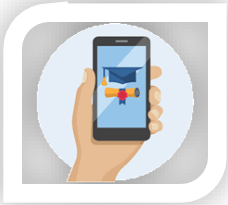
- How to Become a People Connector
- How to Be a Resource Provider
- How to Build a Trusted Resource Network



The Course Will Enable You to Become a Skilled NetWeaver Regardless of Where You Currently Stand.



## Diplomat Certification



The **NetWeaver™ Diplomat Certification Course** Includes 11 Lessons Designed to Teach You How to Become a Successful NetWeaver.

### Key Features:

- Multi-Media Content
- Pop Quizzes
- Course Moderation
- Earn Points Upon Completion
- Zoom Integration (Optional)

### Certificate-of-Completion



Complete Course and Receive Your Certificate-of-Completion.





## Ambassador Program



The **NetWeaver™ Ambassador Program** Allows NetWeaving Enthusiasts to Earn Extra Income Marketing This Program.

### Ambassador Role:

- Create Public and Private Groups
- Create Discussion Forums
- Recruit New Members
- Upload/Sell/eBooks
- Create/Publish/Sell eLearning Courses
- Refer Other Ambassadors



### Reports

Ambassador Activities and Earnings Are Tracked and Reports Are Generated in Real-Time.





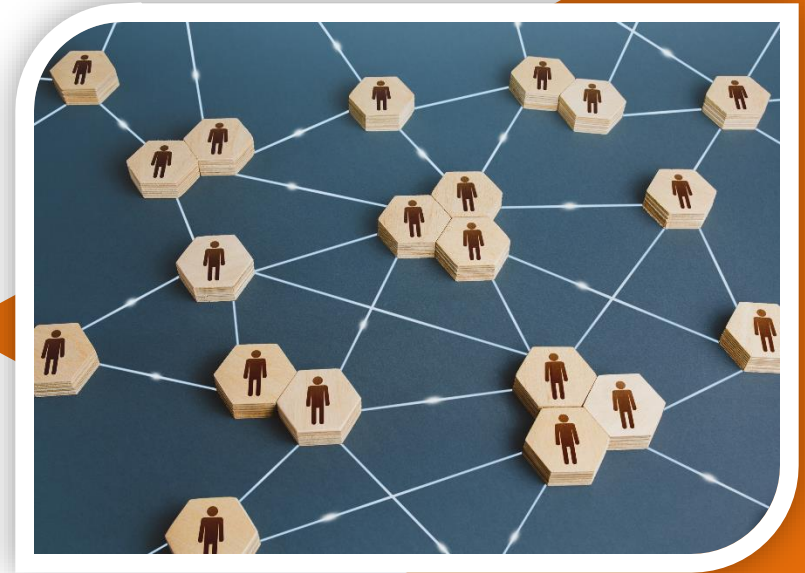
## Groups and Forums



The **NetWeaver™ Groups and Forums** Allow Members to Connect, Follow, and Share Around a Common Industry Theme or Interest.

### Groups/Forum Features:

- Set up Private/Public Groups
- Moderate Groups
- Create Discussion Forums
- Invite Others to Join
- Earn Digital Points Based on Activities



### New Feed

The News Feed Captures Users Engagement For Both Groups and Community Wide Activities.



## Ripple Effect Stories



The **NetWeavers™ Ripple Effect Stories** Feature Allows Members to Post Their Favorite NetWeaving Experiences in the Community.

### How It Works:

- Members Post A Story and Attach Photo
- The Story is Approved & Published
- Other Members Can Rate a Story
- Other Members Can Comment on a Story





## Rewards Program



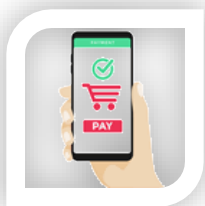
The Rewards Program Allows Members to Earn Valuable Points Based Upon Dozens of Interactions Within the Community.

### How Points Are Earned:

- Website Visits
- Create/Join Groups
- Complete eLearning Courses
- Shop the Marketplace

### How Points Are Used:

- Transfer Points (**Pay-It-Forward**) to Others
- Donate Points to a Non-Profit Organization
- Shop the Marketplace (Get Discounts)



### Purchase Points

Members Can Increase Their Points Balance By Purchasing Points Using a Major Credit Card.



## Pay-It-Forward



Members Can Participate in **Pay-It-Forward** Initiatives by Transferring Digital Points to Other Members in the Network.

### How It-Works:

- Select a Member In the Community
- Select The Number of Points to Transfer
- Click the **Transfer** Button
- A Notification Is Sent to The Recipient



### Reports

Members Points Activities are Tracked and Reports Are Generated in Real-Time.



## Catalyst Connector



The **NetWeaver™ Catalyst Connector** Offers Guidance and Help Executives Needing to Forge New Trusted Relationships.

### Catalyst Connector Role:

- Assist Executives to Expand Their Networks
- Organize & Host NetWeaving Meetings
- Facilitate and Moderate Meetings
- Help Build Internal and External Networks



The Actions of The NetWeaver Often Come Back Around to Benefit the Hosting Catalyst Connector and Their Organization.





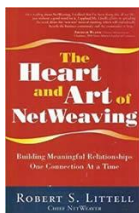
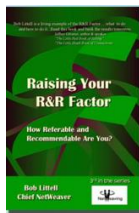
## Marketplace



The Online Marketplace Is Where NetWeavers Promote Their Own Digital Products and Services Within the Community.

### How it Works:

- Members Create an Account
- Members Upload Their eBooks
- Members List Their Services
- The System Tracks Sales and Earnings



### NetWeaving eBooks

The Marketplace also includes NetWeaving books published by Bob Littell.



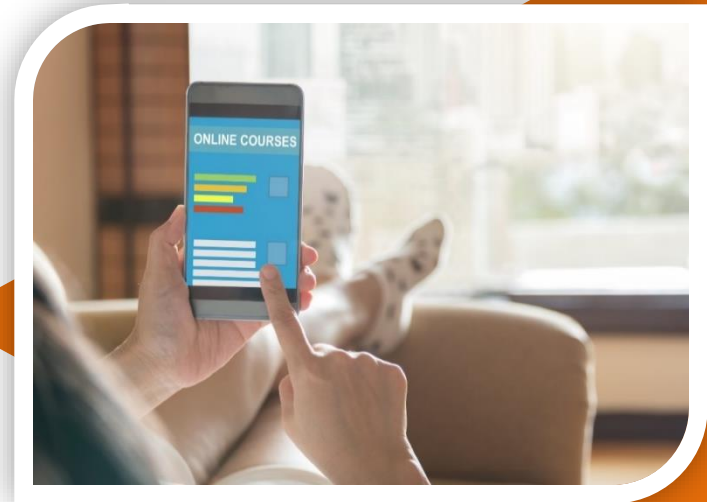
## eLearning Center

The eLearning Center Is Where Member Create and Publish Their Micro-courses in the Community.



### How it Works:

- Members Create an Account
- Members Create and Publish Courses
- Members Set Their Prices
- The System Tracks Sales and Earnings



### Courses Builder

The Course Builder Tool Allow Members to Publish Micro-courses Complete with Lessons, Topics, and Quizzes.



## Events Calendar



A Dynamic Calendar of **NetWeaving** Events, Networking Events, and Other B2B/B2C Events.

### Key Features:

- Browse Calendar of Events
- Book Events Attendance
- Share Events on Social Networks





## Tracking & Reports



The Portal Tracks User Engagements and Generate Reports in Real-time.

### Key Metrics Includes:

- Digital Points Earned
- Assessment Quiz Completion
- Diplomat Certification Course Completed
- Other Courses you have Completed
- Marketplace Earning
- Referral Commission Earnings









## Pilot Program



The **NetWeavers™ Connect** Pilot Program Will Be Implemented In Select Organizations Around the Country.

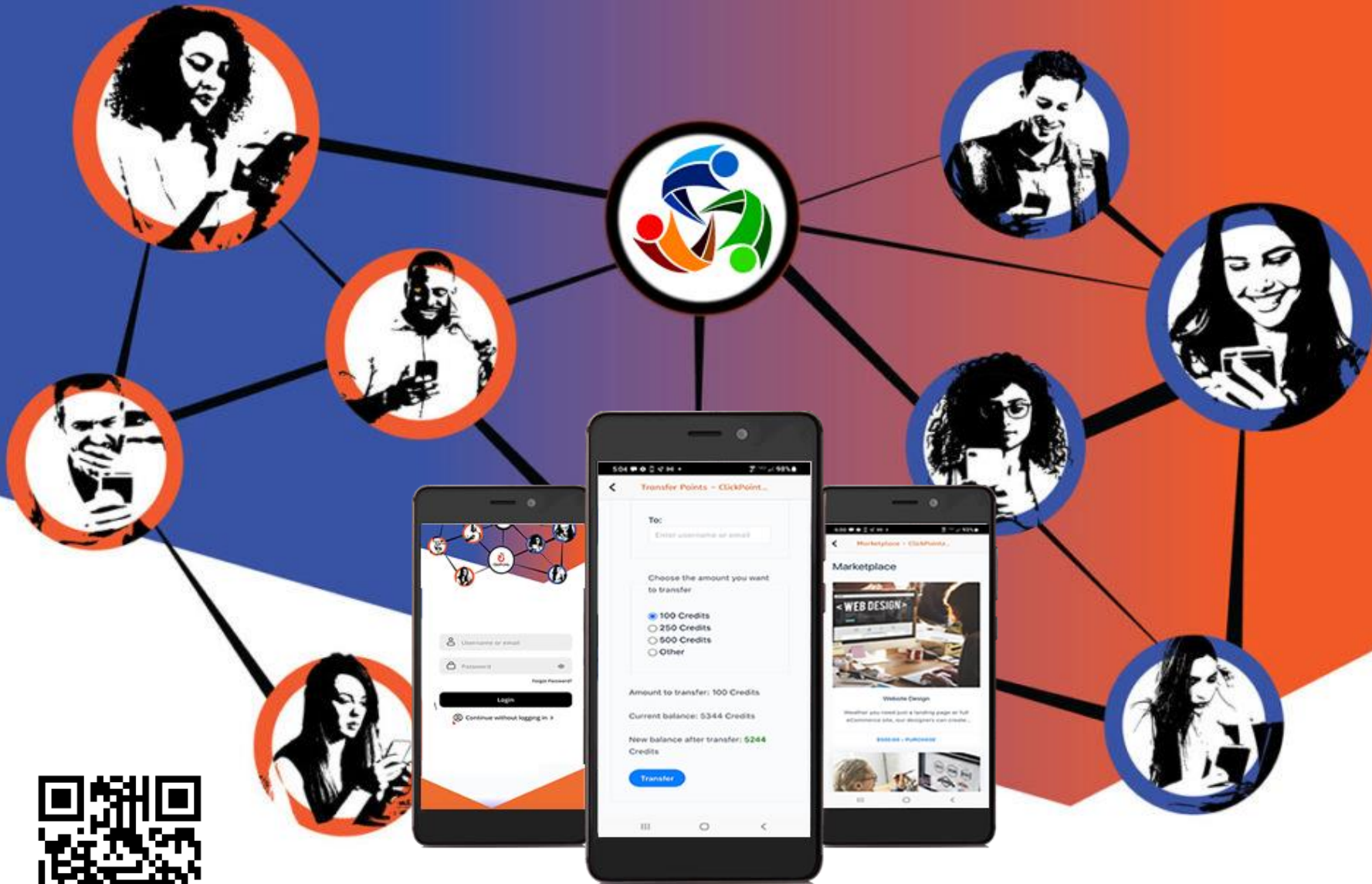
### Target Pilot Organizations:

- Chambers of Commerce
- B2B/B2C Organizations
- Non-Profit Organizations
- Fraternities & Sororities
- Alumni Associations



### Reports

After the Pilot Program is Complete and the Results Have Been Analyzed, the Platform Will Be Launched Nationwide and Internationally.



**Coming Soon!**

**The NetWeaver™ Mobile App! September 2024**